



**WI-PS311G-24V
8GE+3GE Ports 24V PoE
Switch
with 8-Port PoE Datasheet**



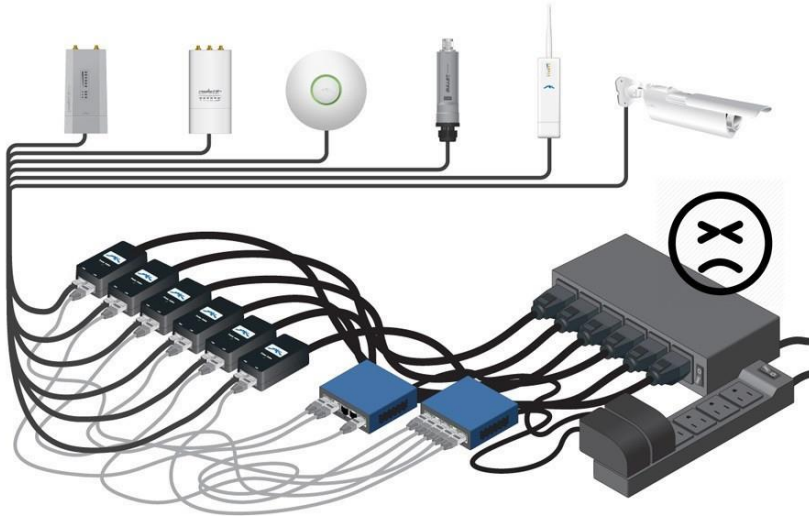
www.wireless-tek.com

Highlights

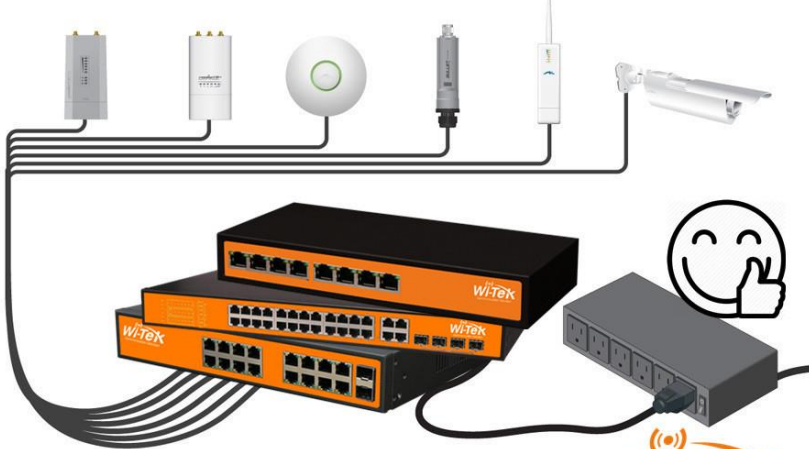
- 8GE+3GE Ports PoE Switch with 8-Port PoE
- Supports PoE power up to 24W for each port
- Supports 24V Passive PoE compliant PDs
- External power adapter supply 120W



Typical Applications



WI-TEK 24V Passive PoE Switch



Wi-Tek
Communication Solution

Description

what this product does

WI-PS311G-24V is a 11GE Ports unmanaged switch that requires no configuration and provides 8 PoE Ports. The 11-Ports desktop switch provides an easy way to expand your wired network. All 11 ports support auto-MDI/MDIX, eliminating the need to worry about the type of cable to use. Featuring full duplex mode, the WI-PS311G-24V can process data at a rate of up to 2000Mbps making it an ideal choice for expanding your high performance wired network. Moreover, with innovative energy-efficient technology, the WI-PS311G-24V can save up to 68% of power consumption, making it an eco-friendly solution for your home or office network.

High Performance

WI-PS311G-24V Fast Ethernet Switch provides 11 10/100/1000Mbps Auto-Negotiation RJ45 ports. All ports support Auto MDI/MDIX function, eliminating the need for crossover cables or Uplink ports. Featuring non-blocking switching architecture, WI-PS311G-24V forwards and filters packets at full wire-speed for maximum throughput. With 10K Jumbo frame, the performance of large files transfers is improved significantly. And IEEE 802.3x flow control for Full Duplex mode and backpressure for Half Duplex mode alleviate the traffic congestion and make WI-PS311G-24V work reliably.

Easy to Use

The auto features of this Ethernet switch make installation plug and play and hassle-free. No configuring is required. Auto MDI/MDIX eliminates the need for crossover cables. Auto-negotiation on each port senses the link speed of a network device (10, 100, 1000Mbps) and intelligently adjusts for compatibility and optimal performance.

Specifications

HARDWARE FEATURES

Interface	11 100/1000Mbps RJ45 Ports
Network Media	10/100/1000BASE-TX: UTP category 5 or better (maximum 100m)
Fan Quantity	Fanless
Power Consumption	120W (max. with PoE device connected)
External Power Supply	External Power Adapter(Output: DC24V / 5A)
PoE Ports (RJ45)	PoE PIN: 4,5+ 7,8- PoE Ports: Port1- Port8 Power Supply: 120W
Backbound Bandwidth	22Gbps
Mac Address Table	8K
Dimensions	136*66*32 mm(L*W*H)

SOFTWARE FEATURES

Transmission Method	Store-And-Forward
Advanced Functions	Priority Function Mac Address Auto-Learning And Auto-Aging Store and forward IEEE 802.3x flow control for Full-duplex Mode Backpressure for Half-duplex Mode
OTHERS	
Certification	CE, FCC, RoHS
Package Contents	POE Switch Electric Line Guide Book/Warranty Card
Environment	Operating Temperature: -10°C~55°C